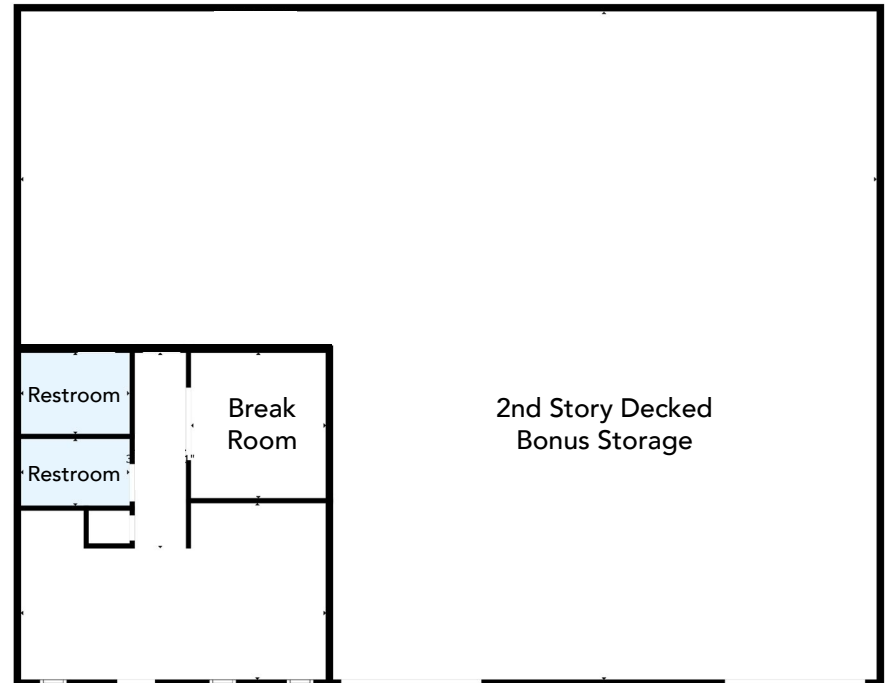
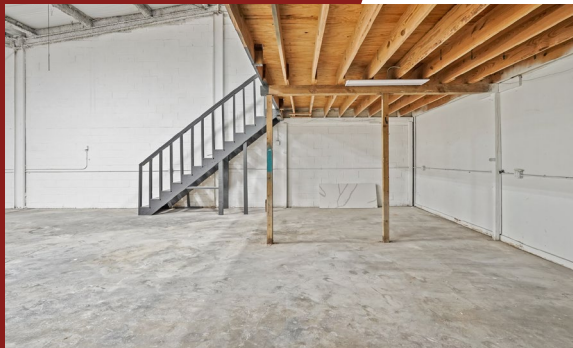


West 34th Street

BUSINESS PARK

6201 W 34th St, Houston, TX 77092
FOR LEASE | SUITE 6201 C



Click for 360° Tour

RifleCRE

± 3,600 SF | Gated Business Park

± 600 SF Office | 3,000 SF Warehouse

2nd Story Decked Bonus Storage

16' Clear Height

200 Amp | 3-Phase | 208/120 Volts Electric Service

2 - 12'x12' Front Loading Doors

Renovated 2023

Base Rent

\$10.75/SF NNN

NICK TERRY, SIOR, CCIM | MANAGING PARTNER
📞 832.479.2500 | ✉️ nick@riflere.com

STACEY STEVENS | SENIOR ASSOCIATE
📞 713.936.6844 | ✉️ stacey@riflere.com

LANDON COKER | ASSOCIATE
📞 281.883.3913 | ✉️ landon@riflere.com